

# WARN INDUSTRIAL HOIST

WINCH MODEL

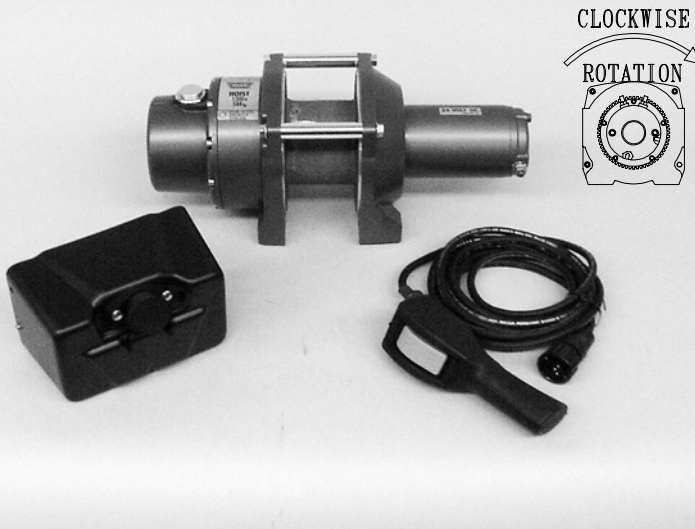
PART NUMBER

TYPE

**DC1200**

PN 60035

**12V ELECTRIC**



05/21/02

Rated for 1200 lbs, this compact hoist is built to work. Its heavy duty permanent magnet motor, 216:1 gear ratio and dual cone brake combine to ensure safe and reliable performance. Designed to meet ANSI B30.5 standards.

**ENGINEERING DATA:**

**STANDARDS COMPLIANCE:**

- **Maximum rated load :** 1200 lbs (544kg)
- **Maximum wire rope recommended:** 3/16" 4200 lbs (1909kg) minimum breaking strength
- **Drum barrel diameter:** 3.54" (90 mm)
- **Drum flange diameter:** 6.0" (152 mm)
- **Distance between flanges:** 2.7" (68.6 mm)
- **Contactors:** Industrial contactor with 12' ( 3.7 M) heavy duty remote control
- **Approximate shipping weight:** 25 lbs ( 12 kg )
- **Gear ratio:** 216:1
- **Motor:** 12 volt DC permanent magnet 1.3 hp (0.97 KW)

- ANSI B30.5

**PERFORMANCE DATA:**

**AVAILABLE ACCESSORIES:**

LAYER	LINE LOAD		LINE SPEED		3/16" (5m m) WIRE ROPE CAPACITY	
	lb.	kg	ft/m in.	m/m in.	ft.	meters
1	1200	545	18	5.5	13	4.0
2	1089	495	20	6.1	27	8.2
3	997	453	22	6.7	42	12.8
4	919	418	23	7.0	58	17.7
1 st LAYER	LINE LOAD		LINE SPEED		DUTY CYCLE	
	lb.	kg	ft/m in.	m/m in.	amps	m in/10 m in
	0	0	30	9.0	27	2.5
	500	227	25	7.7	80	2.0
	750	341	22	6.7	106	1.8
	1200	545	18	5.5	153	1.3

- OverLoad Interrupt pn 61929

**WARN INDUSTRIES, INC. INDUSTRIAL PRODUCTS**

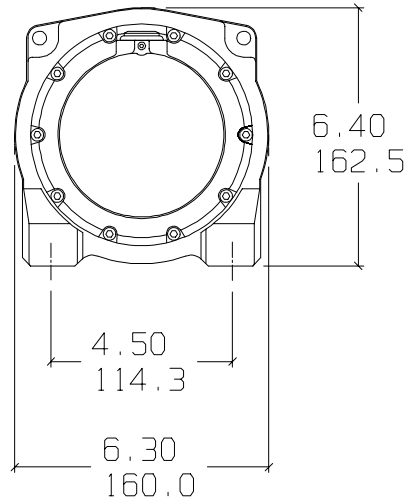
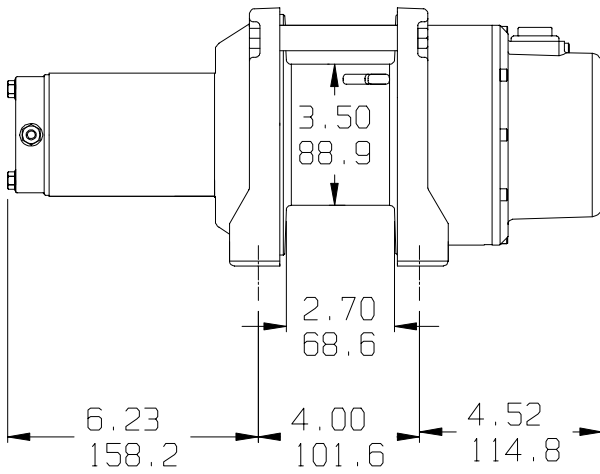
12900 S.E. Capps Road, Clackamas, OR USA 97015-8903  
 Customer Service (in North America): 1.800.543.9276  
 Customer Service (international): 1.503.722.3008  
 Fax:1.503.722.3000 www.warn.com



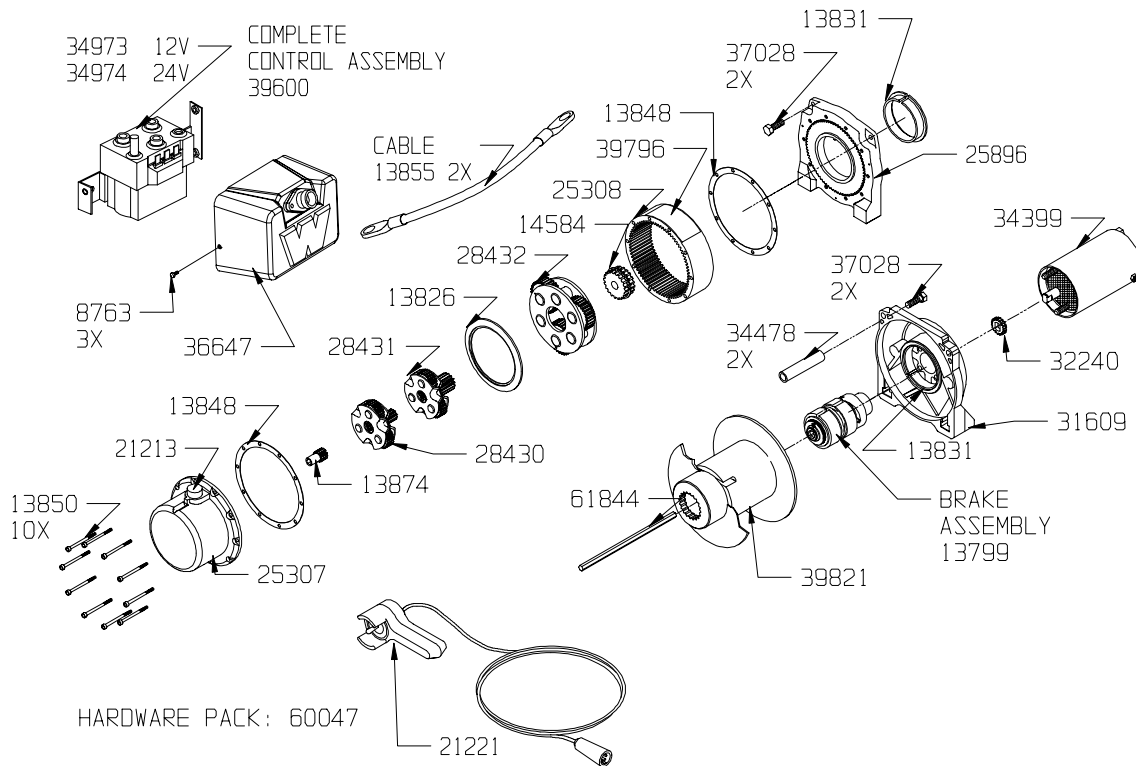
# WARN INDUSTRIAL HOIST

WINCH MODEL	PART NUMBER	TYPE
<b>DC1200</b>	PN 60035	<b>12V ELECTRIC</b>

## DIMENSIONAL DATA



## REPLACEMENT PARTS



## WARN INDUSTRIES, INC. INDUSTRIAL PRODUCTS

12900 S.E. Capps Road, Clackamas, OR USA 97015-8903  
 Customer Service (in North America): 1.800.543.9276  
 Customer Service (international): 1.503.722.3008  
 Fax: 1.503.722.3000 www.warn.com



