

# WARN INDUSTRIAL HOIST

WINCH MODEL

PART NUMBER

TYPE

**DC1200**

PN 60411

**24V ELECTRIC**



05/21/02

Rated for 1200 lbs, this compact hoist is built to work. Its heavy duty permanent magnet motor, 216:1 gear ratio and dual cone brake combine to ensure safe and reliable performance. Designed to meet ANSI B30.5 standards.

**ENGINEERING DATA:**

- **Maximum rated load :** 1200 lbs (544kg)
- **Maximum wire rope recommended:** 3/16" 4200 lbs (1909kg) minimum breaking strength
- **Drum barrel diameter:** 3.54" (90 mm)
- **Drum flange diameter:** 6.0" (152 mm)
- **Distance between flanges:** 2.7" (68.6 mm)
- **Contactora:** Industrial contactor with 12' ( 3.7 M) heavy duty remote control
- **Approximate shipping weight:** 25 lbs ( 12 kg )
- **Gear ratio:** 216:1
- **Motor:** 24 volt DC permanent magnet 1.3 hp (0.97 KW)

**STANDARDS COMPLIANCE:**

- ANSI B30.5

**PERFORMANCE DATA:**

| LAYER      | LINE LOAD |     | LINE SPEED |         | 3/16" (5m m) WIRE ROPE CAPACITY |            |
|------------|-----------|-----|------------|---------|---------------------------------|------------|
|            | lb.       | kg  | ft/m in.   | m/m in. | ft.                             | meters     |
| 1          | 1200      | 545 | 18         | 5.5     | 13                              | 4.0        |
| 2          | 1089      | 495 | 20         | 6.1     | 27                              | 8.2        |
| 3          | 997       | 453 | 22         | 6.7     | 42                              | 12.8       |
| 4          | 919       | 418 | 23         | 7.0     | 58                              | 17.7       |
| 1 st LAYER | LINE LOAD |     | LINE SPEED |         | amps                            | DUTY CYCLE |
|            | lb.       | kg  | ft/m in.   | m/m in. |                                 | min/10 min |
|            | 0         | 0   | 30         | 9.0     | 13                              | 2.5        |
|            | 500       | 227 | 25         | 7.7     | 38                              | 2.0        |
|            | 750       | 341 | 22         | 6.7     | 53                              | 1.8        |
|            | 1200      | 545 | 18         | 5.5     | 80                              | 1.3        |

**AVAILABLE ACCESSORIES:**

- OverLoad Interrupt pn 61930

**WARN INDUSTRIES, INC. INDUSTRIAL PRODUCTS**

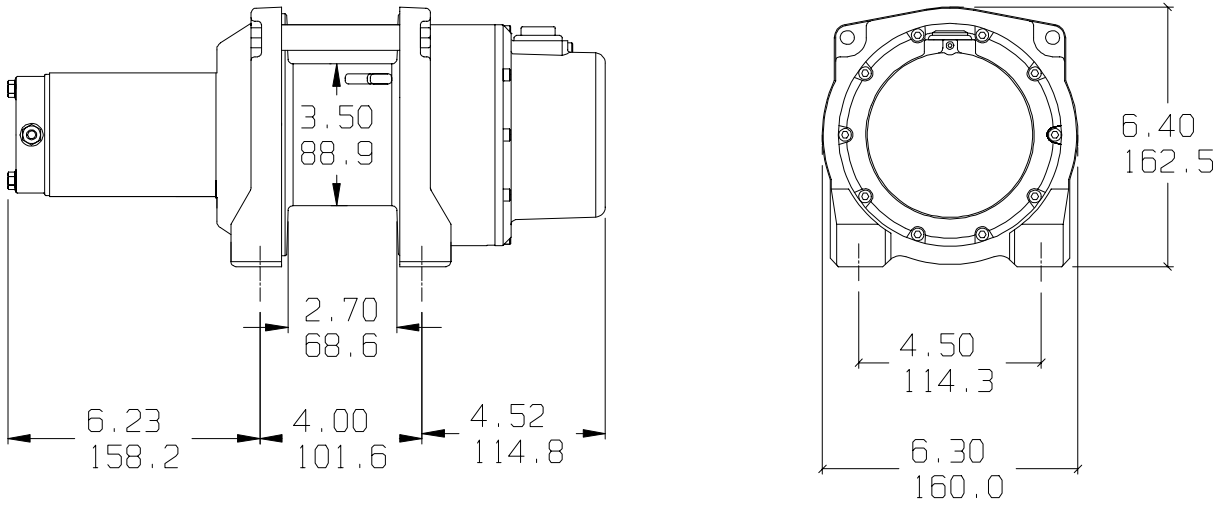
12900 S.E. Capps Road, Clackamas, OR USA 97015-8903  
 Customer Service (in North America): 1.800.543.9276  
 Customer Service (international): 1.503.722.3008  
 Fax:1.503.722.3000 www.warn.com



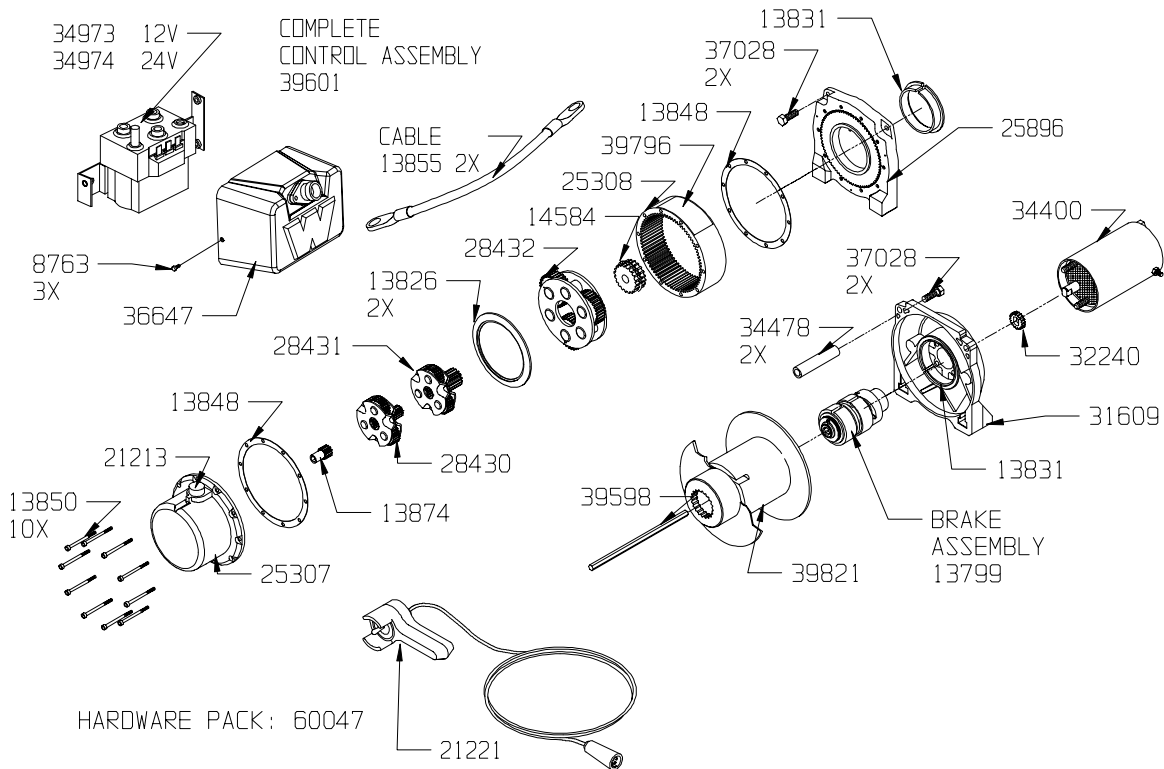
# WARN INDUSTRIAL HOIST

| WINCH MODEL   | PART NUMBER | TYPE                |
|---------------|-------------|---------------------|
| <b>DC1200</b> | PN 60411    | <b>24V ELECTRIC</b> |

## DIMENSIONAL DATA



## REPLACEMENT PARTS



## WARN INDUSTRIES, INC. INDUSTRIAL PRODUCTS

12900 S.E. Capps Road, Clackamas, OR USA 97015-8903  
 Customer Service (in North America): 1.800.543.9276  
 Customer Service (international): 1.503.722.3008  
 Fax: 1.503.722.3000 www.warn.com



